

GEMINI next Generation



Mission statement.....	2
What would you like to tell us about your new house?	3
One kWh of electricity and CO ₂	4
Global radiation · 30 = electricity yield.....	5
We have to get out of oil, coal, biofuels, natural gas and uranium.....	6
The ecological footprint can also be smaller than zero.....	7
Start into the solar age with a Climate protection superiority house.....	8
If everybody did that.....	9
Climate Protection Superiority House.....	9
One property two GEMINI next Generation.....	10
GEMINI next Generation short description.....	11
Model rental workshop: Self-construction with safety net.....	11
Ready-to-use: including foundation.....	11
From the production hall to the installation site.....	12
Will soon also be possible purely electrically.....	13
Trailer to transport a house segment.....	14
Can be positioned at any time, can be occupied at any time.....	15
2 – 4 room standard version.....	16
4 – 6 rooms XW and XL version.....	16
Some like it hot.....	17
Hay fever, no thanks!.....	18

Mission statement

To be part of the solution instead of part of the problem and to enable others, our customers, to be part of the solution instead of part of the problem.

Climate change and dependence on a finite amount of fossil energy is a very serious problem. We need to get out of oil, coal, biofuel, natural gas and uranium.

For many this situation is so stressful that they take refuge in fantasy worlds, where the increase from 280 ppm to 420 ppm CO₂ in the atmosphere is not a cause of climate change and where oil fields are replenishing themselves again and again. People who are panic-stricken that solving the problem would significantly reduce their standard of living.

Making it possible to be part of the solution means to increase your standard of living through a very exceptional price/performance ratio and maximum comfort.

Being part of the solution means living under 60 photovoltaic modules with 72 cells and over 33 kW peak in a GEMINI next Generation house and using only minimal amounts of self generated electricity for room heating, cooling and hot water due to large heat storage and a special heat pumps system.

With the purchase of a GEMINI next Generation House you become ambassadors of a new age, the solar age, where worldwide wealth prevails and people are no longer plagued by constant existential fears.

Roland Mösl

Drachenlochstraße 1c/5

A-5083 St. Leonhard

+43 699 17343674

founder@pege.org

<http://geminis.pege.org/>



What would you like to tell us
about your new house?

One kWh of electricity and CO₂

1,193 g CO₂ avoidance through electric golf with clean electricity instead of gasoline Golf

1,051 g CO₂ avoidance through electric Golf with clean electricity instead of diesel Golf

1,000 g CO₂ emissions from lignite-fired power generation

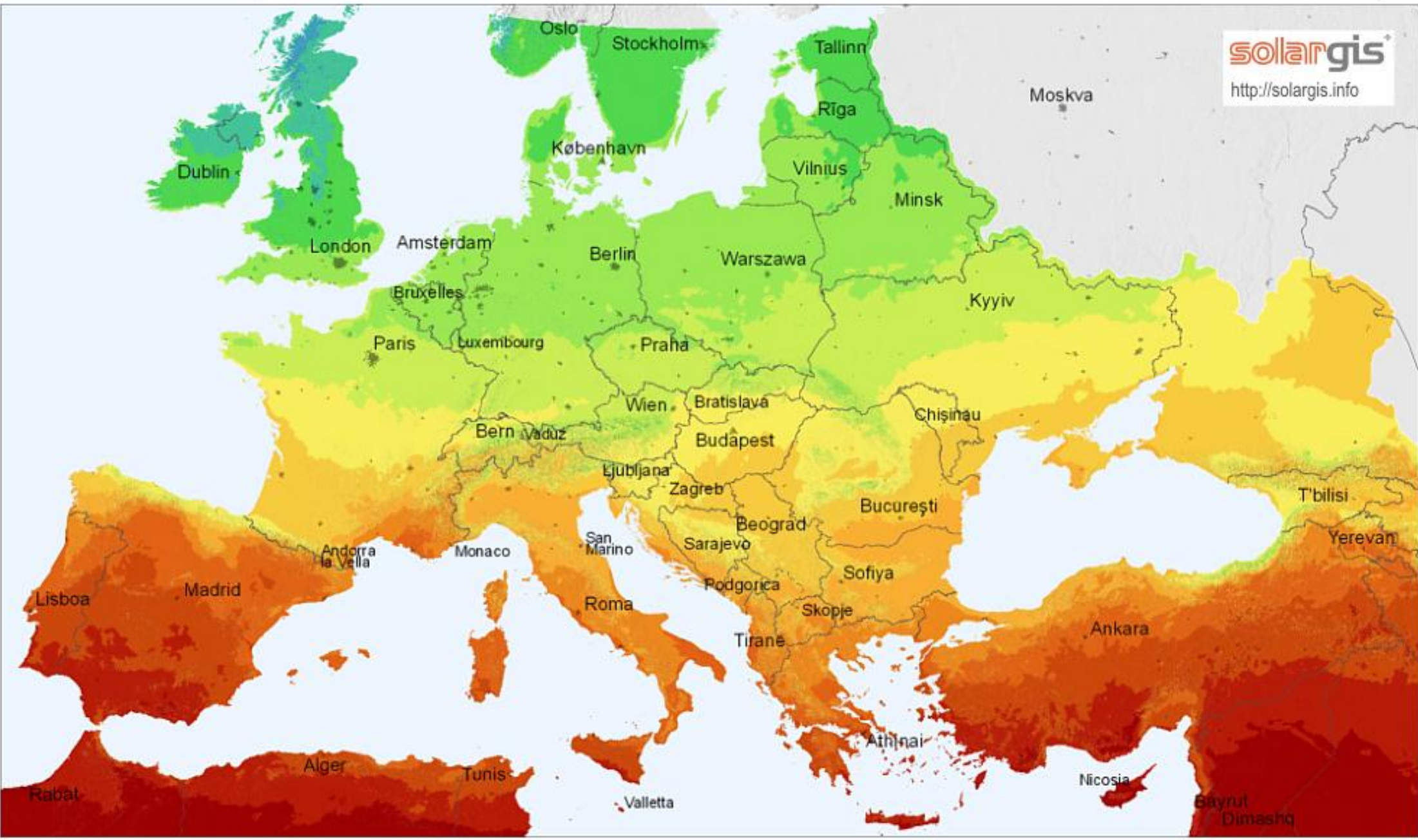
810 g CO₂ emissions from power generation with hard coal

377 g CO₂ emissions from electricity generation with gas-fired combined cycle power plant

167 g CO₂ can be filtered out of the atmosphere and split into C and O

Global radiation · 30 = electricity yield (· 40 at XL version)

Europa



Durchschnittliche jährliche Summe (4/2004 - 3/2010)

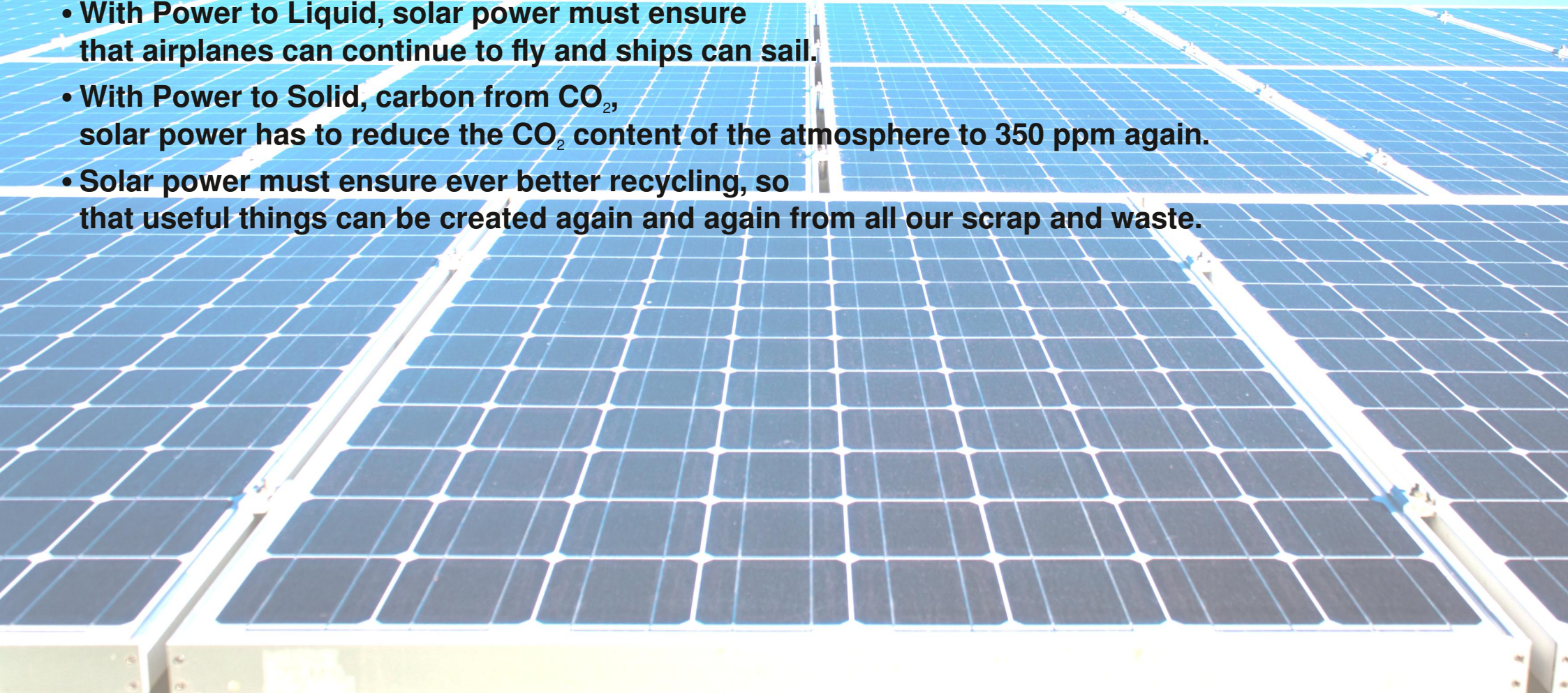


< 700 900 1100 1300 1500 1700 1900 > kWh/m²

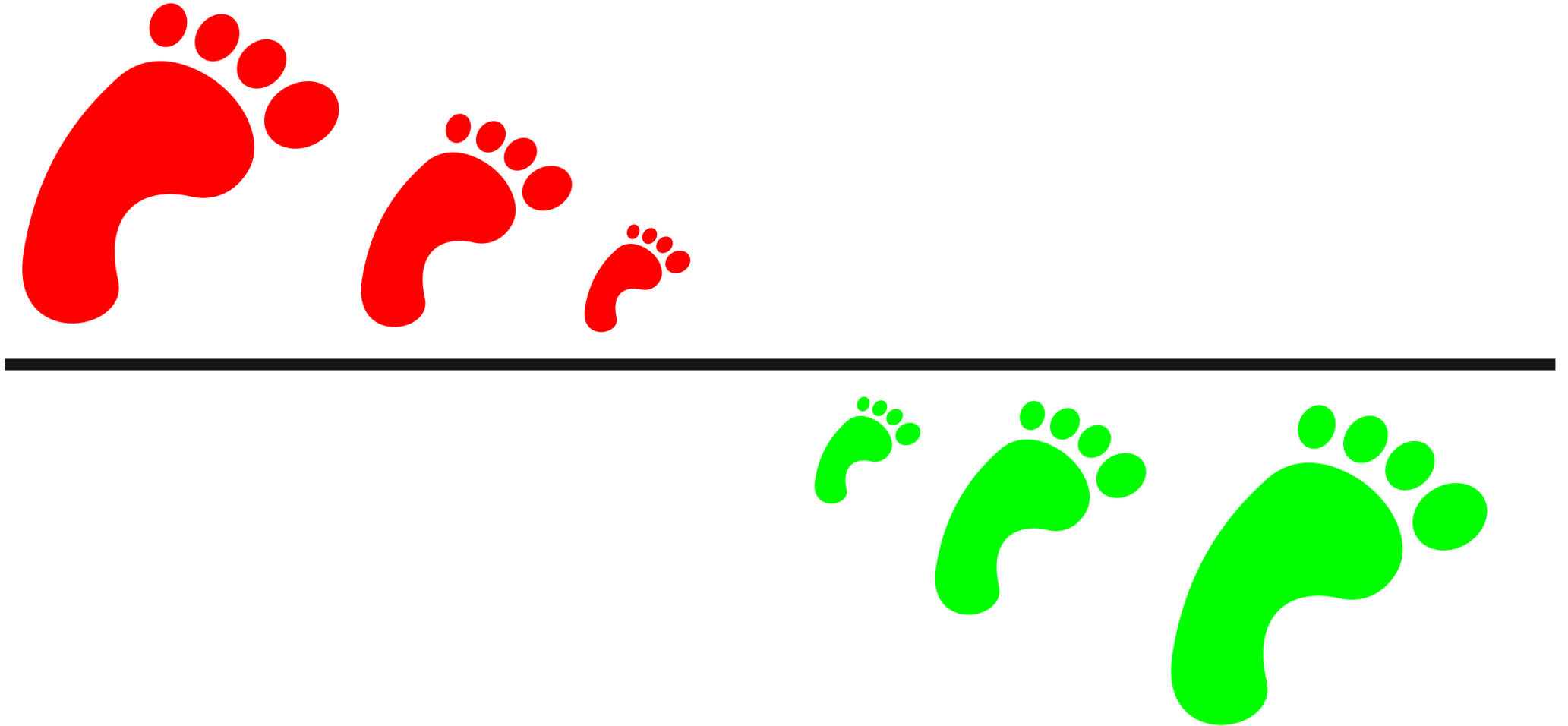
© 2011 GeoModel Solar s.r.o.

We have to get out of oil, coal, biofuels, natural gas and uranium

- **Solar power must bear the brunt of this exit.**
- **In summer, solar power has to build up supplies of Power to Gas for the winter, so that everything works even in a dark lull.**
- **With Power to Liquid, solar power must ensure that airplanes can continue to fly and ships can sail.**
- **With Power to Solid, carbon from CO₂, solar power has to reduce the CO₂ content of the atmosphere to 350 ppm again.**
- **Solar power must ensure ever better recycling, so that useful things can be created again and again from all our scrap and waste.**



The ecological footprint can also be smaller than zero



Operating costs can also be less than zero

Start into the solar age with a Climate protection superiority house

Lowest possible energy consumption for production,
maximum possible energy surplus during operation.

GEMINI next Gen.



Alibi Plus Energy House with 4 kW photovoltaics

Passive house

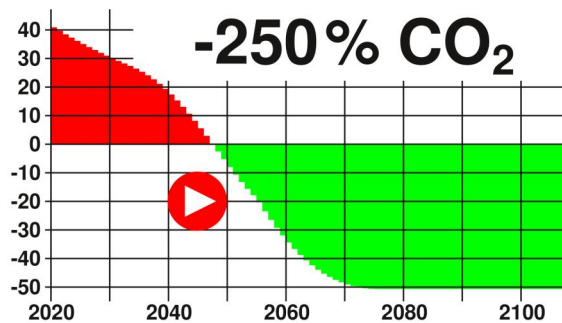
Typical 1960 - 1970

Die 1000 m² Zivilisation



The 1000 m² Civilization

More space for nature, more space for humans, stop wasting land through inefficient use, stop destroying nature for the nonsensically inefficient.

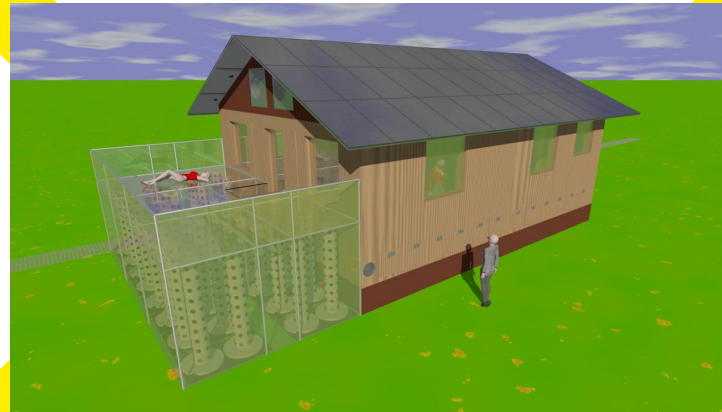


-250% CO₂ emission until 350 ppm are reached again

Less CO₂ emission is much too little, even zero emission is insufficient. Only a planet renovation with large-scale CO₂ filtering and splitting from the atmosphere will help.

If everybody did that

If we live as humanity is doing right now, we are heading for a climate catastrophe. But so far no acceptable and workable way out has been shown.



Climate Protection Superiority House

“GEMINI next Generation” establishes a new class of houses. The requirements are far beyond what architects have been able to imagine until now.

What would happen if 2/3 of humanity were to live in climate protection superiority houses? Most of them much larger than the very compactly dimensioned prototype.

It would already be beyond 100% renewable energy, it would already be a contribution to the planet renovation.

enable
UBI
Universal Basic Income

UBI Universal basic income

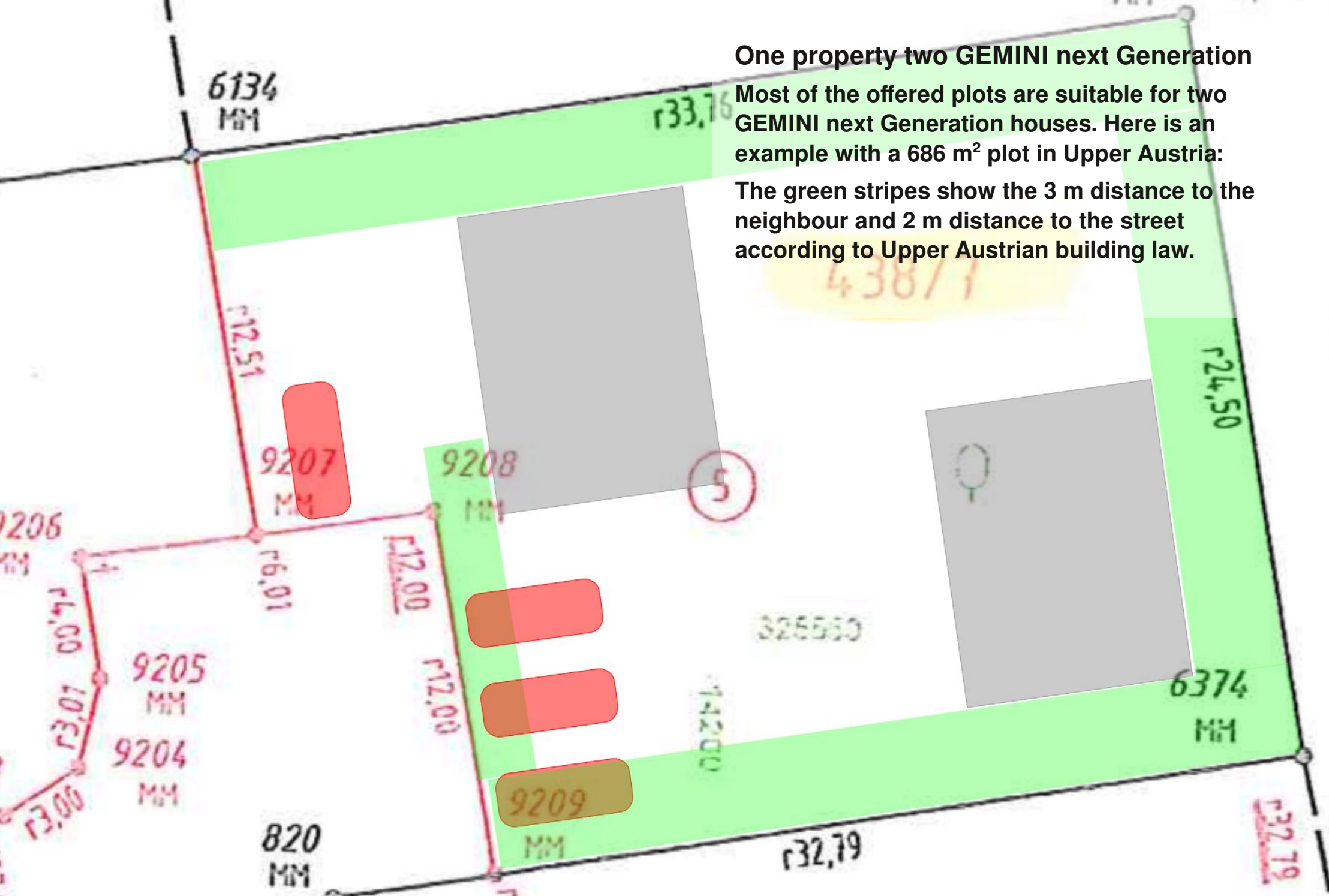
UBI is becoming increasingly necessary, but is not compatible with the current system. Creating the foundations of a UBI compatible society.



The status of the civilization on planet Earth

Without knowing it, mankind has been on a civilization leap for a 1/4 millennium. This must now be completed as quickly as possible with the most urgently needed planet renovation.

The green stripes show the 3 m distance to the neighbour and 2 m distance to the street according to Upper Austrian building law.



GEMINI next Generation short description

The house can be produced all year round in a hall and is then transported to the installation site in 6 or 9 (XL version) segments.

Screw foundations can also be turned into the ground in winter. Set it up, add photovoltaic, make connections and that's it.

- **Minimal costs**
- **Maximum personal contribution is possible**
 - model rental workshop - build it in our manufactory hall
 - pick up by yourself possible
- **Negative operating costs**
 - Electricity sales
 - Optimised own consumption
 - 100 kWh electricity storage
 - Heat pump with 800 kWh heat storage
 - Heat recovery from exhaust air
 - Rainwater utilisation
- **Negative ecological footprint**
- **Highest living comfort**
 - Floor and wall heating
 - Wall cooling for climatisation in summer
 - Smart home
 - Central vacuum cleaner
- **Lots of storage space**

Ready-to-use: including foundation

For a flat plot of land, the foundation is so simple that we can offer foundation inclusive.

Model rental workshop: Self-construction with safety net

You buy the house as a kit with a place in our production hall. In the production hall there will be mostly other self builders and our employees. You will use our machines and tools. You can decide for each work step whether you carry it out yourself or commission us to carry it out.

Each time one of the segments is finished, this segment is transported to your building site. Here you can also decide whether you want to transport the house segment yourself, rent a towing vehicle and/or trailer from us or commission us with the transport. Cars, which may pull 3,500 kg, are typically to rent starting from 80 EUR per day.

The B+E driving licence is a prerequisite for transporting a house segment yourself. The B driving licence can typically be extended to B+E at a cost of EUR 500.

Self builders can help each other, our employees can be asked for advice. This is self-construction with a safety net, the possibility of being able to change to a ready-for-use system at any time during one work step.

You are just in In the construction season indispensable in your profession? No problem, you can work all year round in the temperature-controlled production hall. A screw foundation can also be screwed into the ground all year round.

If your building permit is delayed, you won't lose a year. Building permission delivered in mid-October still means you may be able to celebrate New Year's Eve in your new GEMINI next Generation. Building permit delivered in mid-October for a conventional building project means that you can't even start with the foundation because it's already too cold for concreting.

When you build yourself, you get to know all the equipment, and if repairs become necessary, you don't have to rely on craftsmen.



From the production hall to the installation site:

**B+E driving licence is sufficient. B to B+E costs typically 500 EUR.
Rental cars that can pull 3.5 tons are available from 80 EUR per day.**



From the production hall to the installation site:

Will soon also be possible purely electrically.

This Rivian with a 180 kWh battery should be able to pull a house segment for at least 300 km.

Trailer to transport a house segment



Can be positioned at any time
Can be occupied at any time

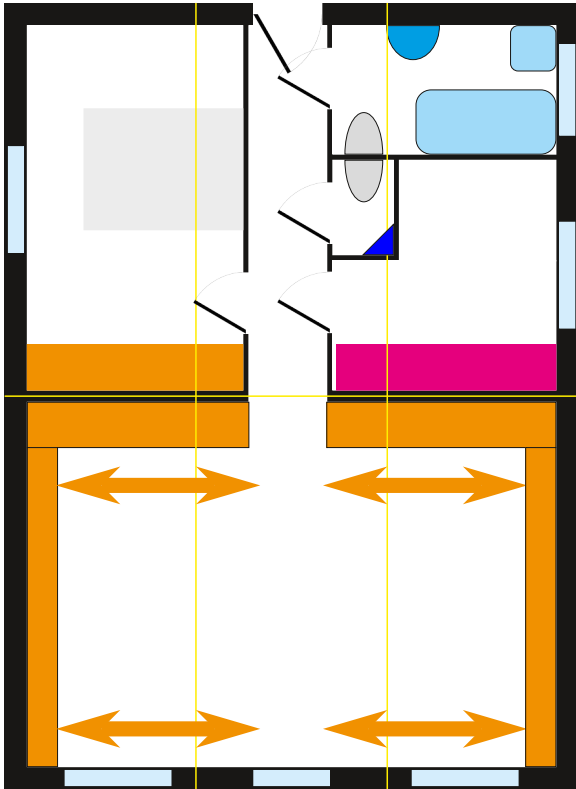


2 – 4 room standard version

The standard version consists of 3•2 segments and can also be subsequently widened to XW or extended to XL.

The standard version is already suitable for a family with 2 children due to sliding wall-furniture elements.

The moveable elements redistribute 21 m² living space between the living room and two further rooms. Thus 2 to 4 rooms are available.



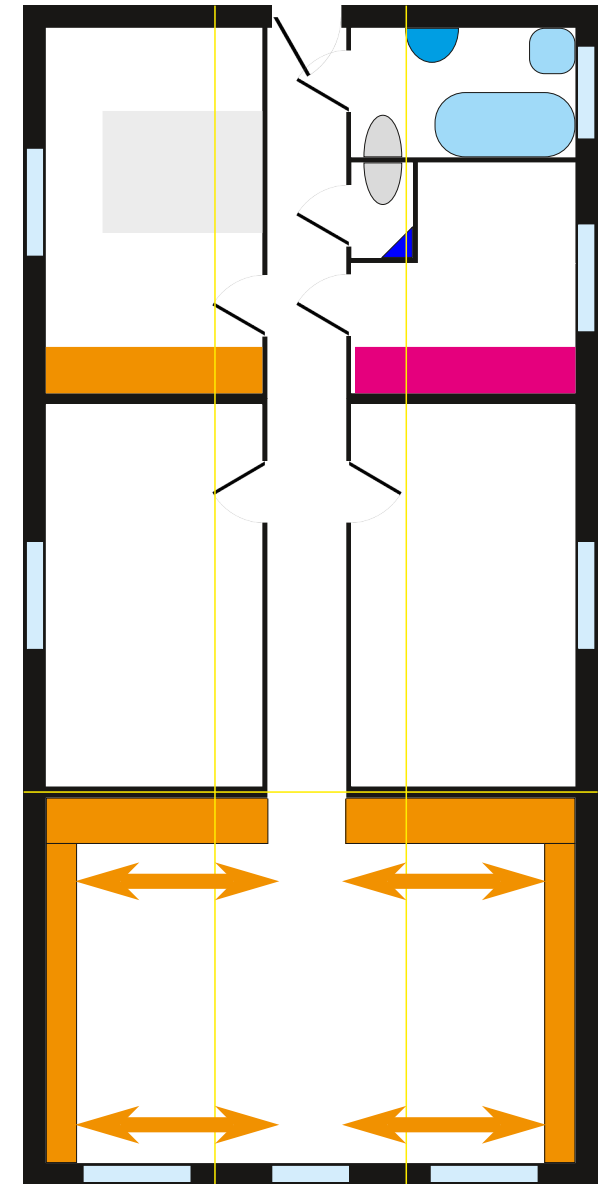
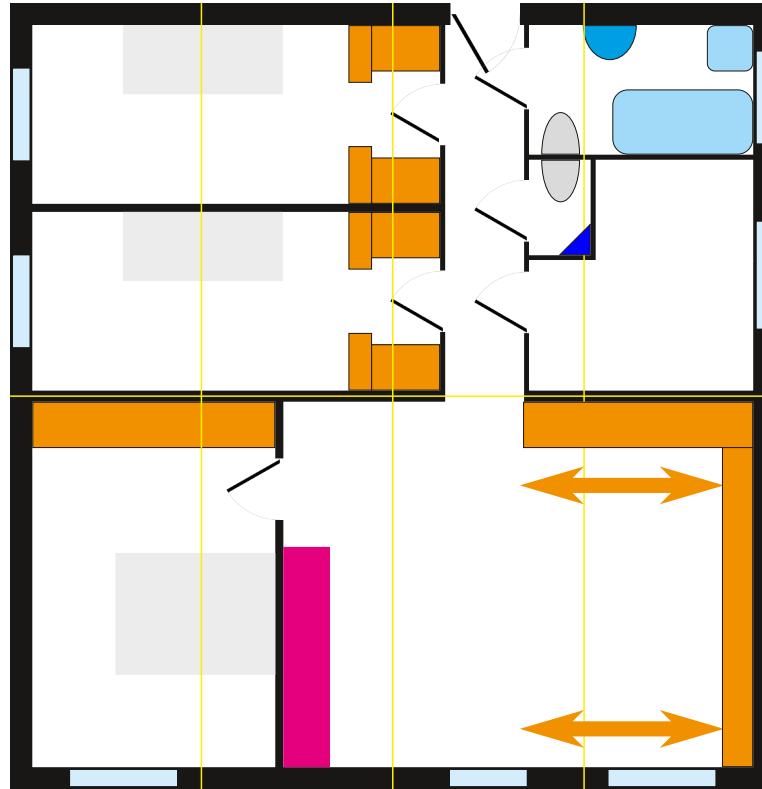
4 – 6 rooms XW and XL version

The XW version is widened from 3•2 to 4•2 segments. From 3•2 to 3•3 segments extended is the XL version.

With the XL version 2 more rooms are added, so 4 to 6 rooms are available.

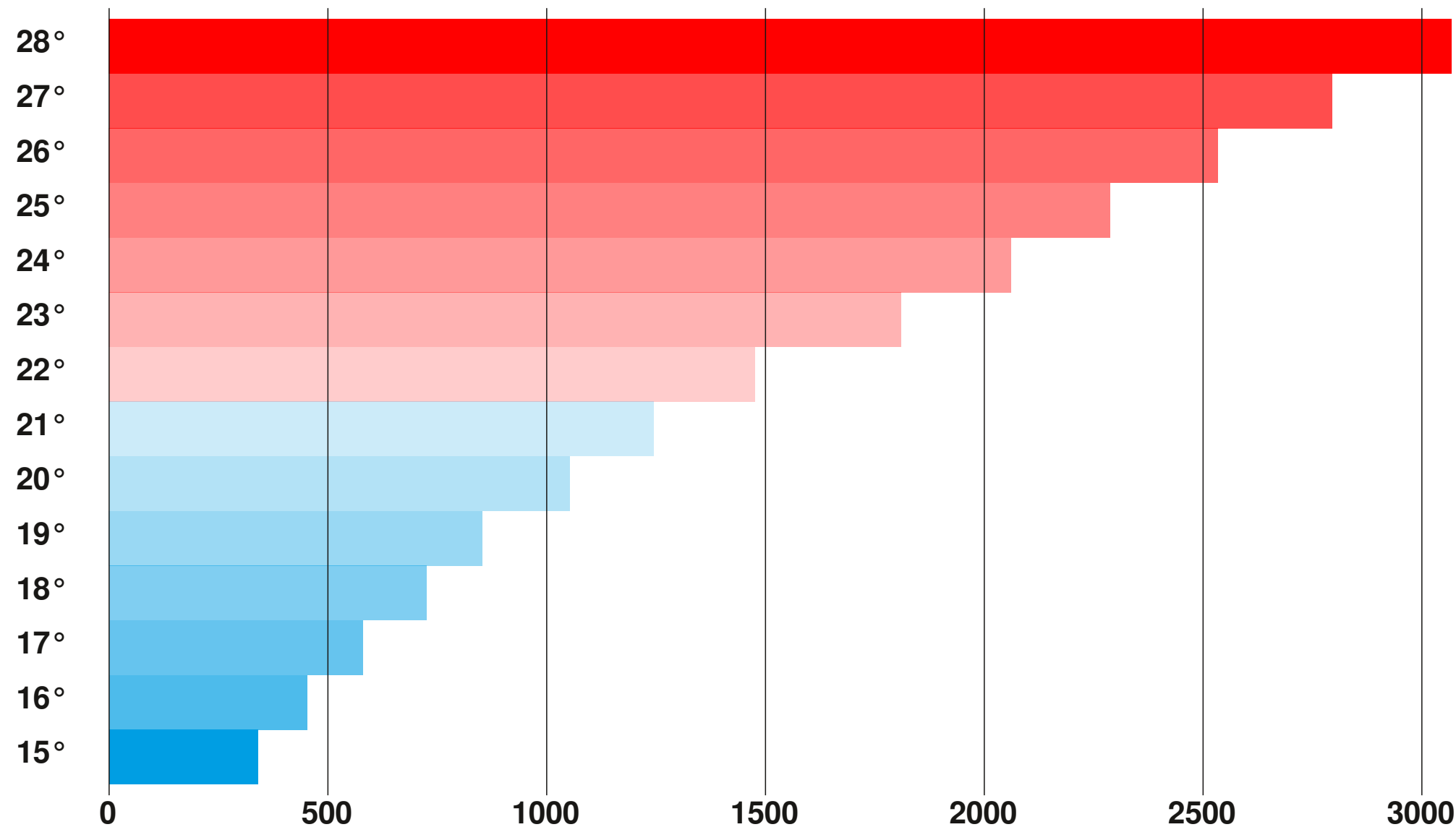
This is here only a short overview. All possible room layouts on:

<https://geminis.pege.org/gemini-room-layout.pdf>

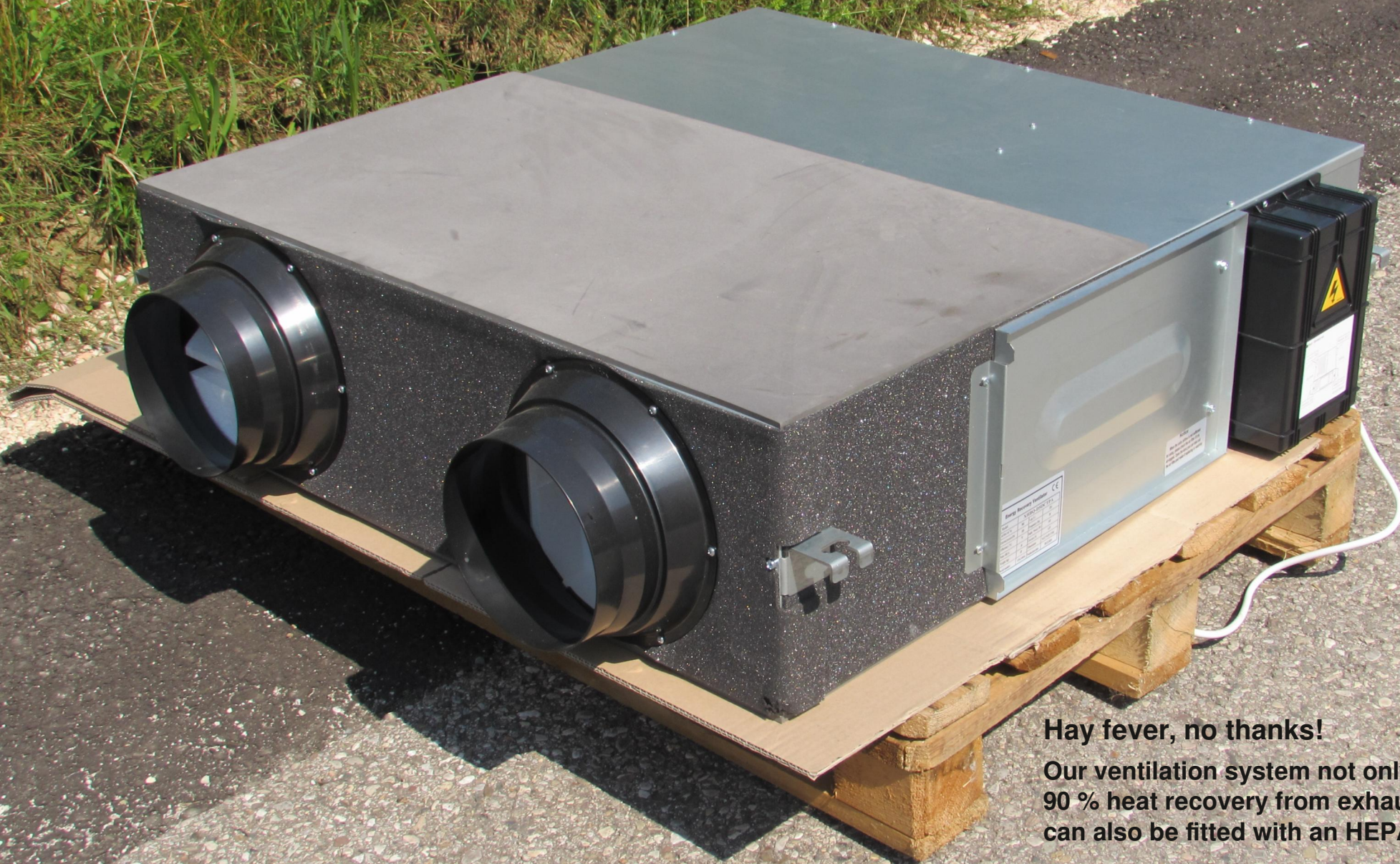


Some like it hot

Annual heat demand of the standard version in Garmisch-Partenkichen according to Ubakus.de.
Some would be glad if their house at 15° would need as little heat as a GEMINI next Generation at 28°.



kWh heat requirement. Our heat pump usually converts 1 kWh of electricity into 5 kWh of heat.
The heat pump almost always uses its own solar power.



Hay fever, no thanks!

Our ventilation system not only achieves 90 % heat recovery from exhaust air, but can also be fitted with an HEPA filter.